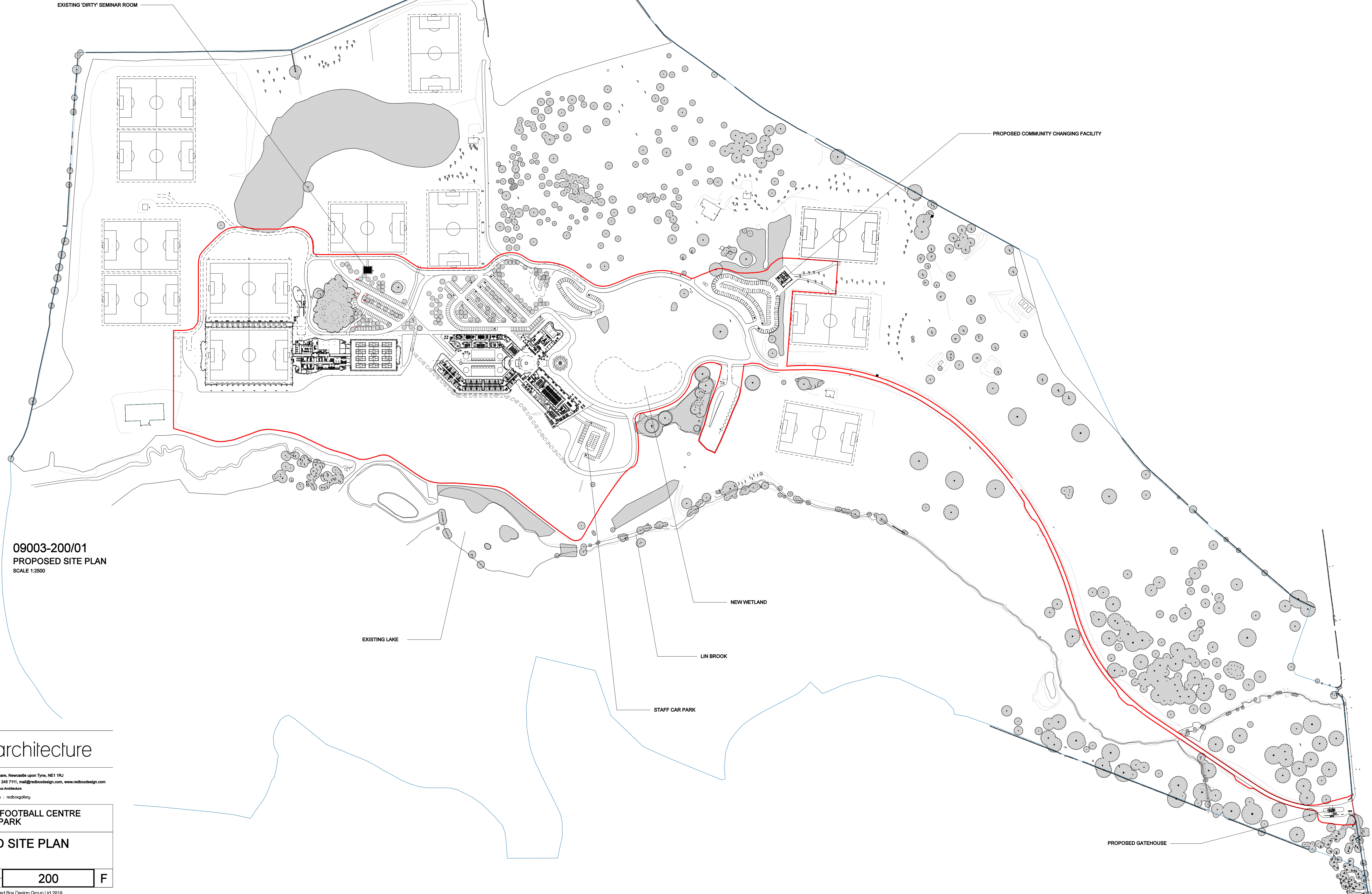


P/2010/00255



RECEIVED
-4 MAR 2010

APPENDIX C3
Plans of the Proposals



09003-200/01
 PROPOSED SITE PLAN
 SCALE 1:2500

redboxarchitecture

Red Box Architecture, St Nicholas Chare, Newcastle upon Tyne, NE1 1RJ
 T: +44 (0)191 245 7100, F: +44 (0)191 245 7111, mail@redboxdesign.com, www.redboxdesign.com
 Red Box Design Group Ltd trading as Red Box Architecture
 redboxdesigngroup : redboxinteriors : redboxgallery

THE NATIONAL FOOTBALL CENTRE
 ST. GEORGE'S PARK

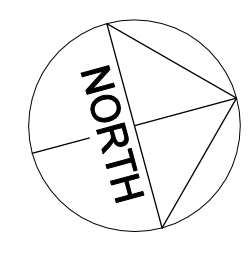
PROPOSED SITE PLAN

1:2500	09 003	200	F
A1	PLANNING		

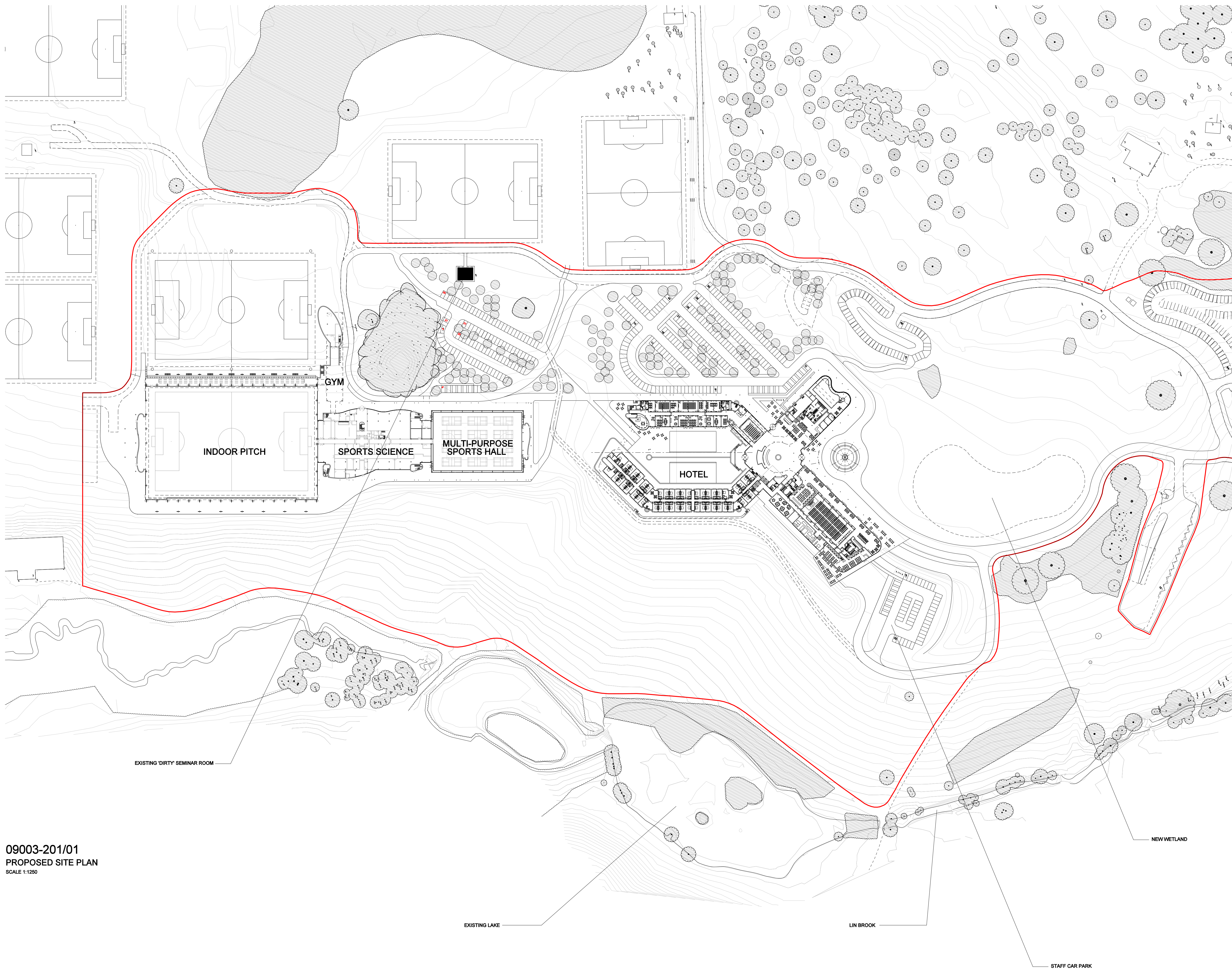
copyright © Red Box Design Group Ltd 2018

Rev	Notes	Date	By	Review
F	ISSUED FOR PLANNING	2010/01/21	SG	BF
E	Draft Issue for design team coordination. Hotel car park layout modified in accordance with Dr Neil's design verbal instructions. Community changing car and coach parking layout and numbers added	2010/02/09	SG	BF
D	Draft Issue For Comments	2010/01/29	MC	SG
C	Draft Issue For Comments	2010/01/29	MC	SG
B	General Update	2010/01/21	MC	SG
A	General Update	2009/12/22	DV	BF
-	First Issue	2009/12/08	DV	BF

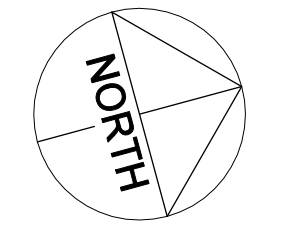
NB: FOR SITE LOCATION RELATIVE TO BURTON SEE CONTEXT PLAN FROM NLP (DRAWING NUMBER MA 40509/001)
FOR LARGER SCALE PROPOSED SITE PLAN SEE RBA DRAWING 201.
FOR LANDSCAPE DESIGN STRATEGY REFER TO WARDELL ARMSTRONG DRAWING AND DESIGN & ACCESS STATEMENT (DRAWING NUMBER NT10620/001)



Notes
 1. To be read with CDM Risk Register
 2. Do not scale, check this is the latest version, if in doubt, ask see drawing issue log for issue history



Notes
 1. To be read with CDM Risk Register
 2. Do not scale, check this is the latest version, if in doubt, ask see drawing issue log for issue history



NOTE:
 1. All public realm/landscaping shown for indicative purposes only.
 2. All internal layouts shown for indicative purposes only.

09003-201/01
 PROPOSED SITE PLAN
 SCALE 1:1250

Rev	Notes	Date	By	Review
D	ISSUED FOR PLANNING	2010.02.12	MC	SG
C	Draft Issue For Comments	2010.01.29	MC	SG
B	General Update	2010.01.09	SG	BF
A	General Update	2009.12.22	DW	BF
-	First Issue	2009.12.08	DW	BF

redboxarchitecture

Red Box Architecture, St Nicholas Chare, Newcastle upon Tyne, NE1 1RJ
 E: +44 (0)191 245 7100, F: +44 (0)191 245 7111, mail@redboxdesign.com, www.redboxdesign.com
 Red Box Design Group Ltd trading as Red Box Architecture
 redboxdesigngroup : redboxinteriors : redboxgallery

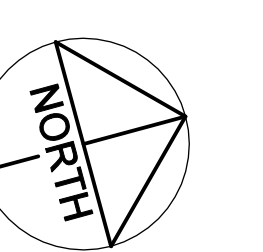
THE NATIONAL FOOTBALL CENTRE
 ST GEORGE'S PARK

PROPOSED SITE PLAN

1:1250	09 003	201	D
A1	PLANNING		

copyright © Red Box Design Group Ltd 2010

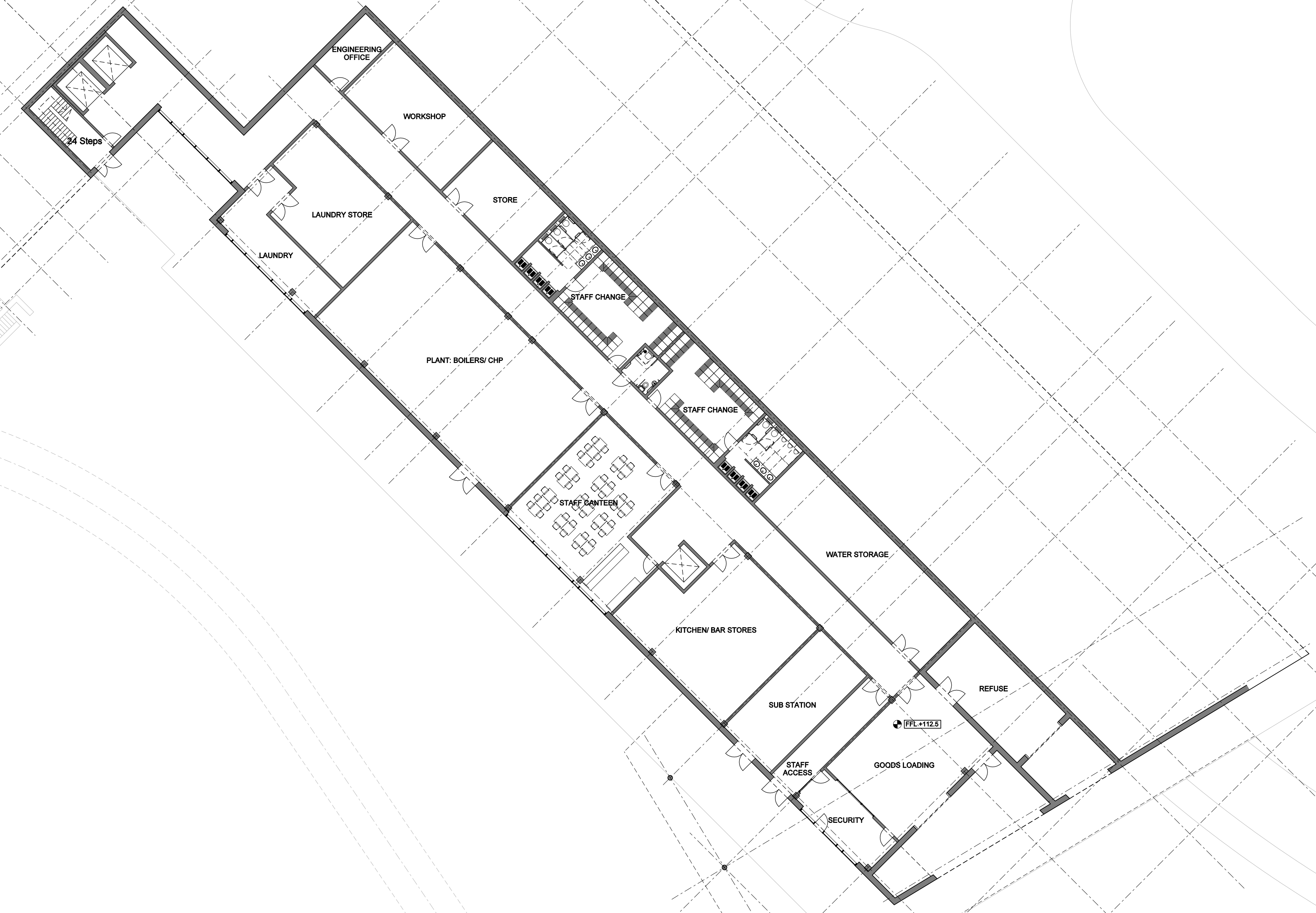
NOTES
 1. To be read with CDM Risk Register
 2. Do not scale, check this is the latest version, if in doubt, ask your drawing issuer for issue history



NOTE:
 Unless noted otherwise, finished floor level (FF) is at +112.5

NOTE:
 1. All public realm/landscaping shown for indicative purposes only.
 2. All internal layouts shown for indicative purposes only.

09003-300/01
 HOTEL BUILDING: LEVEL -1 PLAN
 SCALE 1:200



ISSUED FOR PLANNING	2008/02/22	MC	SS
Draft Issue For Comments	2008/01/29	MC	SS
Final Issue	2008/02/22	DY	BP
Rev	Date	By	Reason

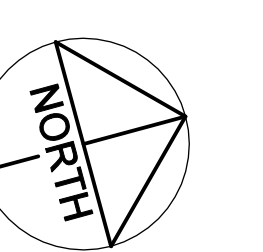
redboxarchitecture
 Red Box Architecture, 25 Haxby Close, Newcastle upon Tyne, NE1 1JH
 T: +44 (0)191 245 7100, F: +44 (0)191 245 7111, red@redboxdesign.com, www.redboxdesign.com
 Red Box Design Group Ltd trading as Red Box Architecture
 redboxdesigngroup@redboxarchitecture.com redboxarchitecture redboxgroup

THE NATIONAL FOOTBALL CENTRE
 ST GEORGE'S PARK
HOTEL BUILDING
Level -1 GA Plan

1:200	09 003	300	B
AD	PLANNING		

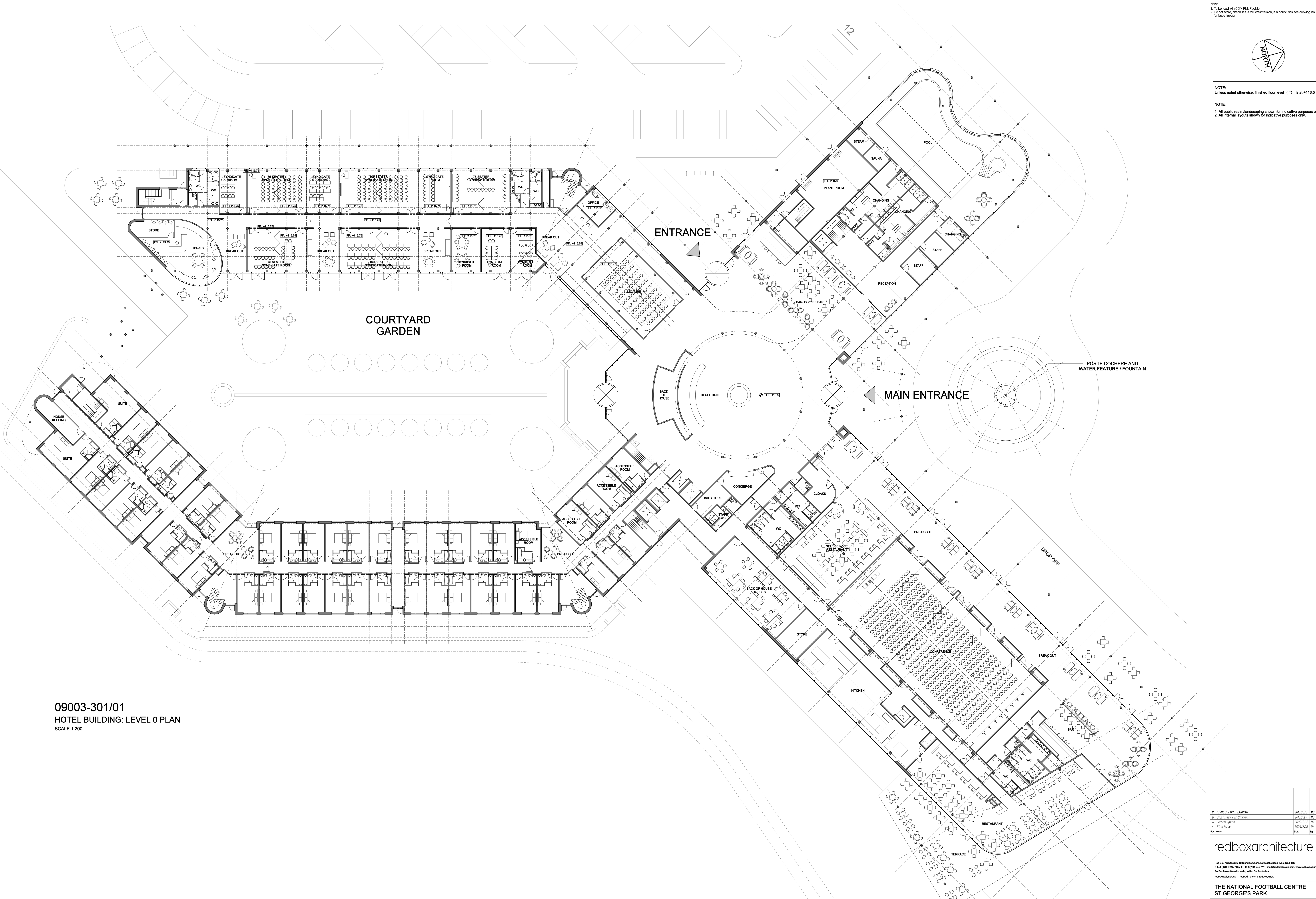
copyright © Red Box Design Group Ltd 2010

NOTES
 1. To be read with CDM Risk Register
 2. Do not scale, check this is the latest version, if in doubt, ask your drawing issuer for issue history



NOTE:
 Unless noted otherwise, finished floor level (FFL) is at +116.5

NOTE:
 1. All public realm/landscaping shown for indicative purposes only.
 2. All internal layouts shown for indicative purposes only.



09003-301/01
 HOTEL BUILDING: LEVEL 0 PLAN
 SCALE 1:200

ISSUED FOR	DATE	BY	NO.
ISSUED FOR PLANNING	20/02/22	WC	59
Final Issue	20/02/22	DY	59
General Update	20/02/22	DY	59
Final Issue	20/02/22	DY	59

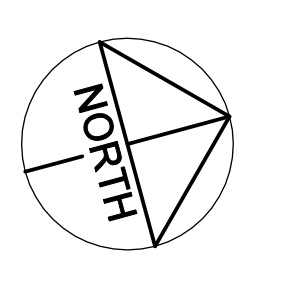
redboxarchitecture
 Red Box Architecture, 21 Hoxton Cross, Hoxton Square, London, N1 9JY
 T: +44 (0)20 245 7100, F: +44 (0)20 245 7101, redboxarchitecture.com, www.redboxdesign.com
 Red Box Design Group Ltd trading as Red Box Architecture
 redboxdesigngroup@redboxarchitecture.com redboxarchitecture redboxdesign

THE NATIONAL FOOTBALL CENTRE ST GEORGE'S PARK			
HOTEL BUILDING Level 0 GA Plan			
1:200	09 003	301	C
AD	PLANNING		

NB: FOR LANDSCAPE STRATEGY FOR PERIMETER BUILDING AND COURTYARD LANDSCAPING, SEE CONTEXT PLAN FROM WARDELL ARMSTRONG (DRAWING NUMBER NT10620-004)

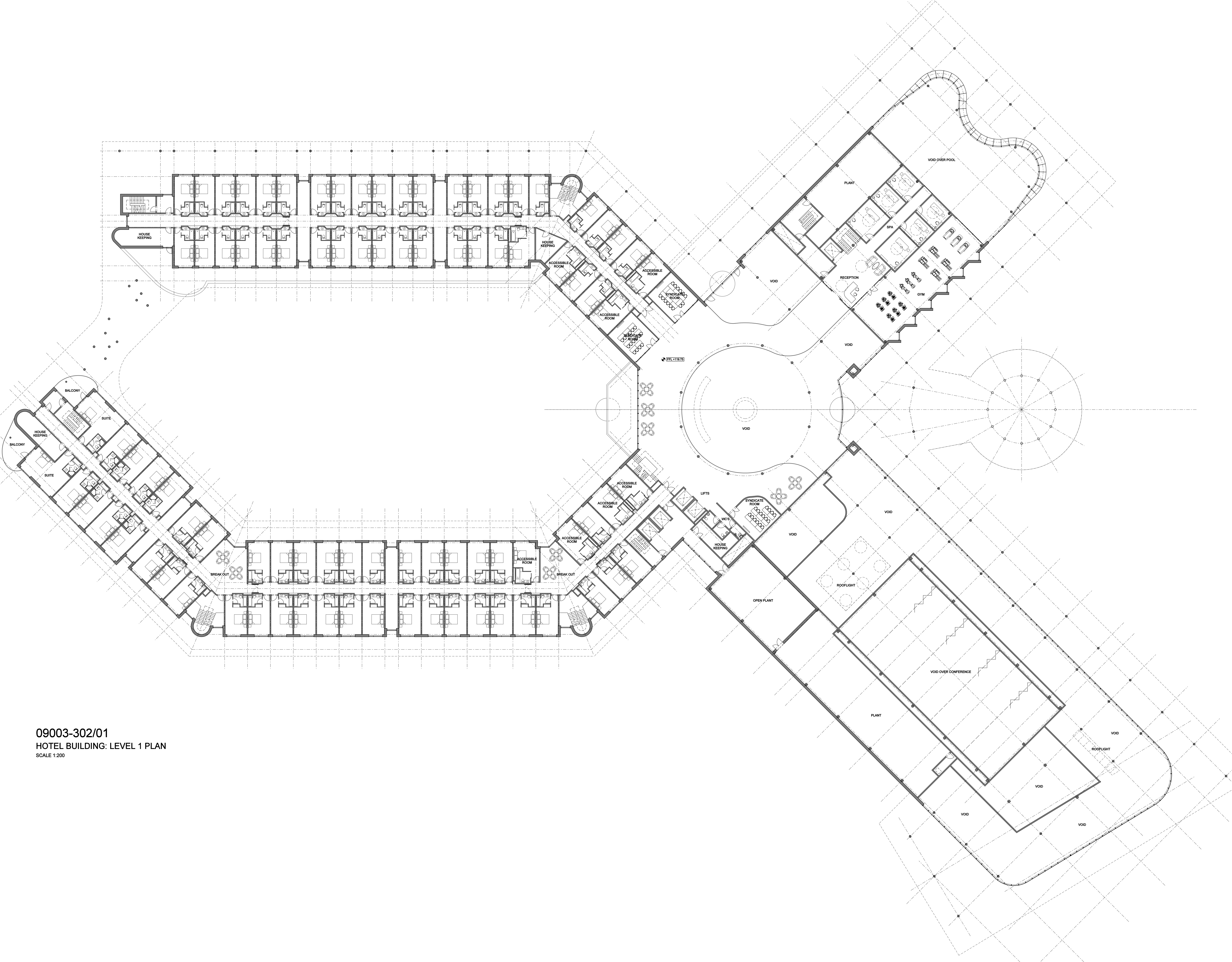
copyright © Red Box Design Group Ltd 2019

NOTES
 1. To be read with CDM Risk Register
 2. Do not scale, check this is the latest version, if in doubt, ask your drawing issuing log for issue history



NOTE
 Unless noted otherwise, finished floor level (FF) is at +119.75

NOTE
 1. All public realm/landscaping shown for indicative purposes only.
 2. All internal layouts shown for indicative purposes only.



09003-302/01
 HOTEL BUILDING: LEVEL 1 PLAN
 SCALE 1:200

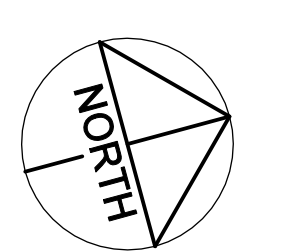
REV	DESCRIPTION	DATE	BY	CHKD
C	ISSUED FOR PLANNING	2009.02.02	MC	SG
B	Client Issues for Comments	2009.02.09	MC	SG
A	General Update	2009.02.22	DY	BP
-	Final Issue	2009.02.08	DY	BP
0	Issue			

redboxarchitecture
 Red Box Architecture, 21 Haxby Close, Newcastle upon Tyne, NE1 1JL
 T: 0191 2512 516, F: 0191 261 711, red@redboxdesign.com, www.redboxdesign.com
 Red Box Design Group Ltd trading as Red Box Architecture
 redboxdesigngroup | redboxinteriors | redboxlandscape

THE NATIONAL FOOTBALL CENTRE ST GEORGE'S PARK			
HOTEL BUILDING Level 1 GA Plan			
1:200	09 003	302	C
AD	PLANNING		

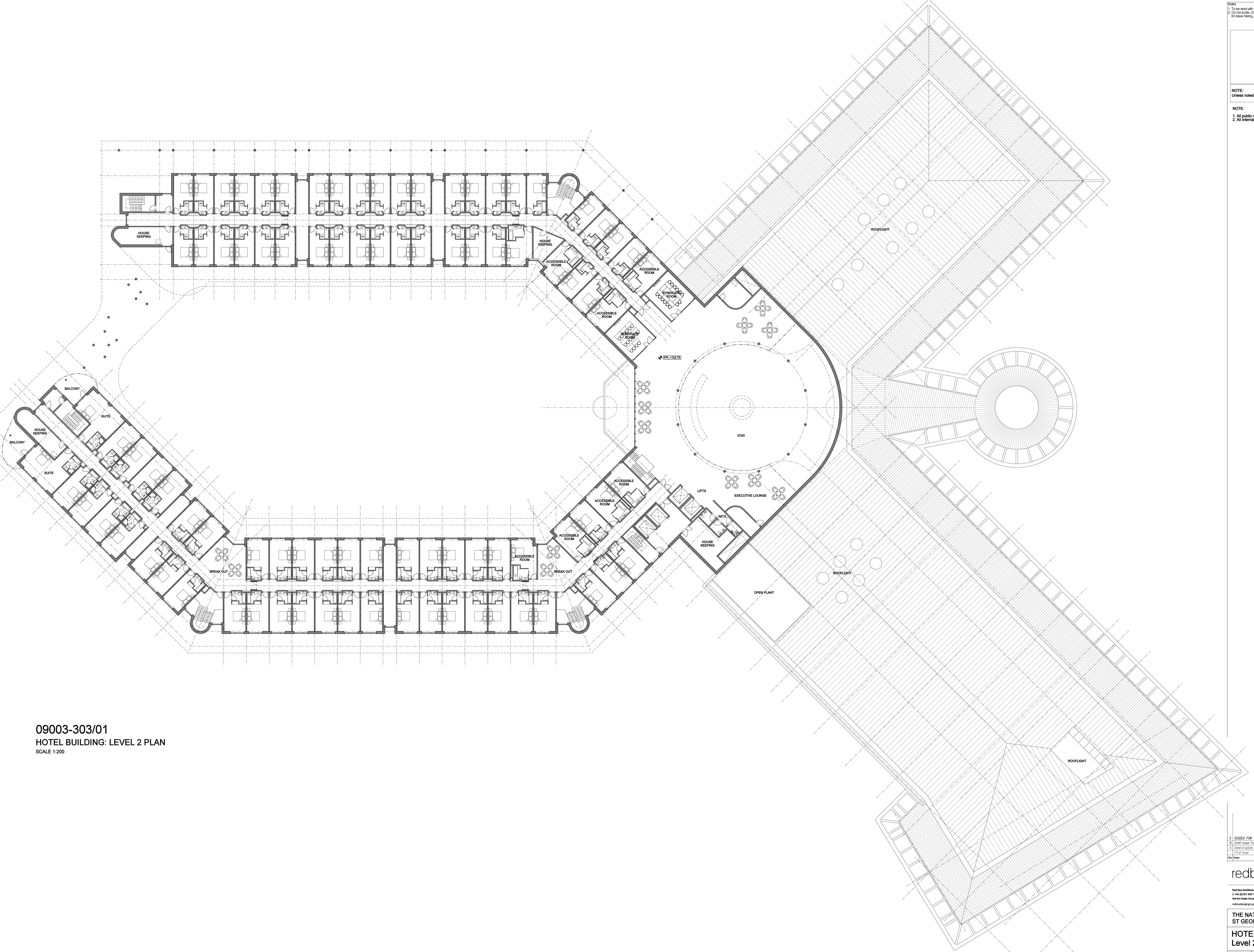
copyright © Red Box Design Group Ltd 2010

NOTES
 1. To be read with CDM Risk Register
 2. Do not scale, check this is the latest version, if in doubt, ask see drawing issue log for issue history



NOTE
 Unless noted otherwise, finished floor level (FF) is at +122.75

NOTE
 1. All public realm/landscaping shown for indicative purposes only.
 2. All internal layouts shown for indicative purposes only.



09003-303/01
 HOTEL BUILDING: LEVEL 2 PLAN
 SCALE 1:200

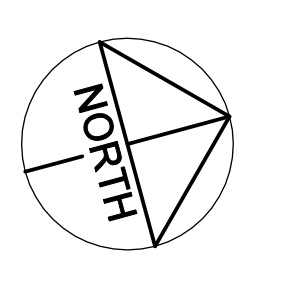
C	ISSUED FOR PLANNING	2009/02/22	MC	SG
D	Spill Issue for Customers	2009/02/22	MC	SG
A	General Update	2009/02/22	DY	BF
F	Final Issue	2009/02/22	DY	BF
Rev	Issue	Date	By	Reason

redboxarchitecture
 Red Box Architecture, 21 Hoxton Cross, Newcastle upon Tyne, NE1 3BU
 T: +44 (0)191 245 7100, F: +44 (0)191 245 7111, red@redboxdesign.com, www.redboxdesign.com
 Red Box Design Group Ltd trading as Red Box Architecture
 redboxdesigngroup | redboxinteriors | redboxgolf

THE NATIONAL FOOTBALL CENTRE ST GEORGE'S PARK			
HOTEL BUILDING Level 2 GA Plan			
1:200	09 003	303	C
AD	PLANNING		

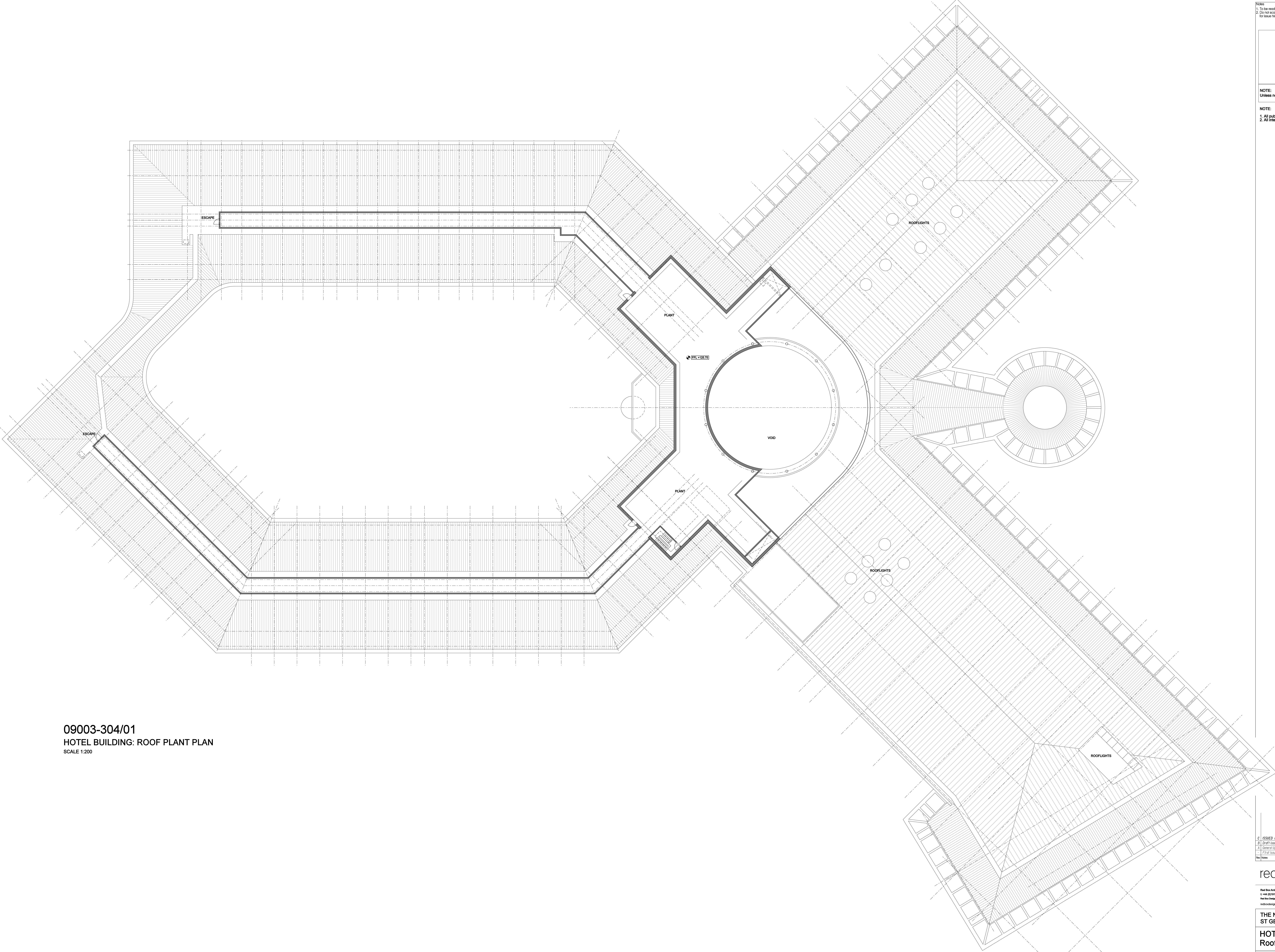
copyright © Red Box Design Group Ltd 2010

NOTES
 1. To be read with CDM Risk Register
 2. Do not scale, check this is the latest version, if in doubt, ask your drawing issuing log for issue history



NOTE:
 Unless noted otherwise, finished floor level (FF) is at +126.75

NOTE:
 1. All public realm/landscaping shown for indicative purposes only.
 2. All internal layouts shown for indicative purposes only.



09003-304/01
 HOTEL BUILDING: ROOF PLANT PLAN
 SCALE 1:200

C	ISSUED FOR PLANNING	2006/02/28	MC	SG
A	Client Issue for Comments	2006/02/28	MC	SG
A	General Update	2006/02/28	DY	BF
A	Final Issue	2006/02/28	DY	BF
Rev	Issue	Date	By	Reason

redboxarchitecture
 Red Box Architecture, 25 Hoxton Chase, Hoxton, London, N1 9PU
 T: +44 (0)20 7463 7100, F: +44 (0)20 7463 7111, red@redboxdesign.com, www.redboxdesign.com
 Red Box Design Group Ltd trading as Red Box Architecture
 redboxdesigngroup - redboxinteriors - redboxlandscape

THE NATIONAL FOOTBALL CENTRE ST GEORGE'S PARK			
HOTEL BUILDING Roof Plant GA Plan			
1:200	09 003	304	C
AD	PLANNING		

copyright © Red Box Design Group Ltd 2010